

WINDFORCE 2015

Bremerhaven

11th WAB Offshore Conference 9–11 June



▶ INVITATION

wab windenergie
agentur

WORKBOATS IN WATER SHOW

With the kind support of:

ela[container]



www.windforce.info/2015

Table of contents

1. Conference participants	4
2. Participant structure	5
3. Overview of complete WINDFORCE 2015 programme	6
4. Event venues in Bremerhaven	7
5. Boat Show fees Quay categories A–G	8
6. Impact of the Boat Show for your business	9
7. Target group	9
8. Planned number of boats	10
9. Port services and vessel support	10
10. Security	11
11. Visitors to the Boat Show	11
12. Access for conference participants	11
13. Schleuse/ Lock Neuer Hafen	12
14. Instructions for Boat Show exhibitors	13
Vessel registration	14
Contact	14

Dear Ladies and Gentlemen,

Since 2005, the industry network WAB has been organising WINDFORCE, the German offshore wind energy conference in Bremerhaven.

In 2012 and 2014, the conference was successfully organised for the first time in Bremen in conjunction with Germany's first offshore wind energy trade fair under the name WINDFORCE 2012 and 2014.

In years to come the conference in Bremerhaven will alternate with the trade fair and conference in Bremen.

In 2012, work began on more projects out at sea. That is why from 2013 we are extending the concept of the conference in Bremerhaven with a Boat Show.

Our objective in organising the exhibition is to offer tangible presentation opportunities to both the international offshore wind energy industry and WAB's 390 members, and to link them to opportunities for successful networking discussions.

We invite you to present your company and its products on the quay at Bremerhaven in close proximity to where Germany's offshore wind energy has its meeting place, an event that attracts some 900 participants from 12 countries.

Put a live message across about the achievement potential of the maritime sector in the offshore industry.

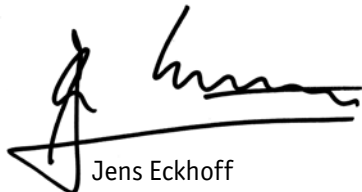
Join us in presenting to political decision-makers, the press, and the German public the steps being taken to further develop the foundation of the energy turnaround offshore wind energy!

We look forward to hearing from you!

Kind regards,



Ronny Meyer
Managing Director,
Wind Energy Agency WAB



Jens Eckhoff
Managing Director,
Offshore Wind Messe und Veranstaltungen GmbH

▶ 1. Conference participants

Conference participants from 13 countries



COUNTRIES



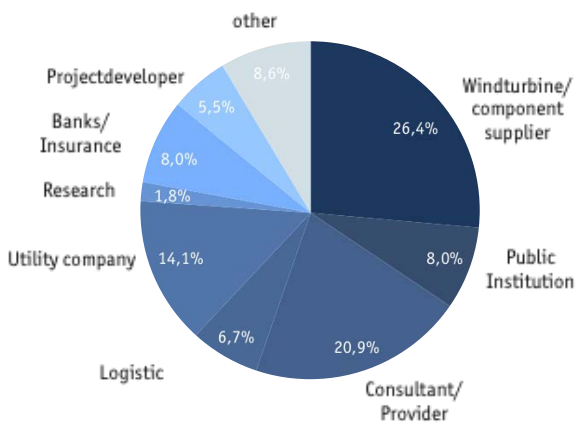
2. Participant structure

WINDFORCE 2014
Bremen

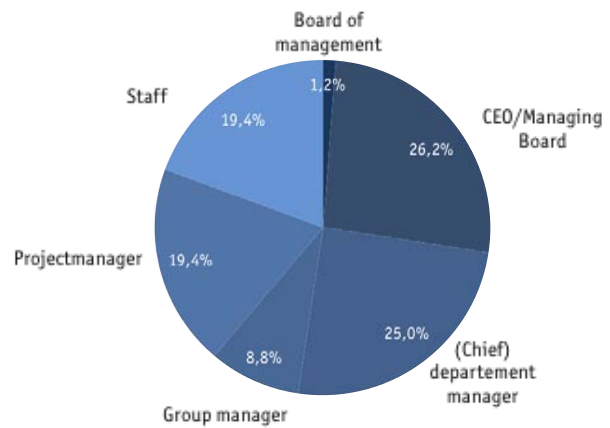
International Trade Fair & 10th Offshore Conference 17-19 June

Structure of Participants from the televote at WINDFORCE 2014

Industrial sector



Position

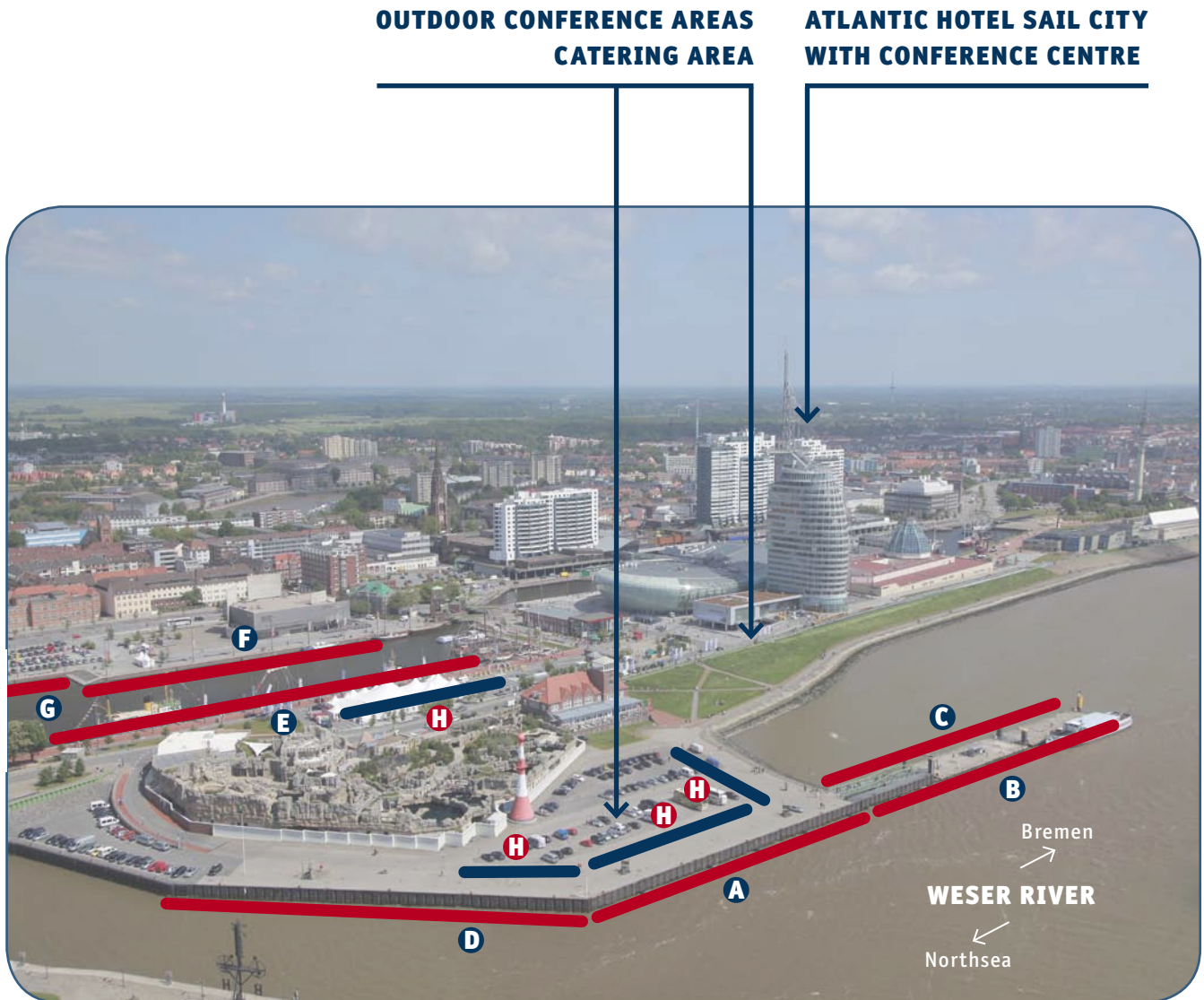


▶ 3. Overview of complete WINDFORCE 2015 programme

Monday 8 June	Tuesday 9 June	Wednesday 10 June	Thursday 11 June	Friday 12 June
Arrival Vessel Workboat in Watershow		8.00 – 9.45 Breakfast Session A, B	8.00 – 9.45 Breakfast Session G, H	8.00 – 17.00 North Sea Windfarm Tour
		10.00 – 13.00 Session C, D	10.00 – 13.00 Session I, J	
	14.00 Conference Registration	13.00 – 15.00 Lunch and Workboat in Watershow		
	16.00 Opening Workboat in Water	15.00 – 17.00 Session E, F	15.00 – 17.00 Session K, L	
	18.00 Conference opening Keynote			
	20.00 WINDFORCE Party	19.30 – 24.00 WINDFORCE Dinner		

Conference
Frame program

4. Event venues in Bremerhaven



**A - G WORKBOATS IN WATER
BOAT SHOW QUAYS**

H HELICOPTER EXHIBITION

► 5. Boat Show fees Quay categories A – G

Berthing charges are included in the fee for exhibitors!

Quay	Description of quay	Position to the Conference Center	Square metre class	Fee for vessel (Net €/m ²)
A	Tide dependent, River Weser	500m across, visible from Conference Center	bis 30m ²	100
			31 – 40m ²	95
			41 – 50m ²	90
			51 – 60m ²	85
			61m ² and more	50
B	Pontoon, Tide independent, River Weser	600m across, visible from Conference Center	bis 30m ²	95
			31 – 40m ²	90
			41 – 50m ²	85
			51 – 60m ²	80
			61m ² and more	50
C	Pontoon, Tide independent, River Weser inside	600m across, best visible from Conference Center	bis 30m ²	120
			31 – 40m ²	115
			41 – 50m ²	100
			51 – 60m ²	95
			61m ² and more	50
D	Tide dependent, River Weser, Lock Neuer Hafen gateway	800m across, not visible from Conference Center	bis 30m ²	85
			31 – 40m ²	80
			41 – 50m ²	75
			51 – 60m ²	70
			61m ² and more	50
E	Neuer Hafen, Bremerhaven, Tide independent	400m across, not visible from Conference Center	bis 30m ²	85
			31 – 40m ²	80
			41 – 50m ²	75
			51 – 60m ²	70
			61m ² and more	40
F	Neuer Hafen, Bremerhaven, Tide independent	600m across, not visible from Conference Center	bis 30m ²	75
			31 – 40m ²	70
			41 – 50m ²	65
			51 – 60m ²	60
			61m ² and more	40
G	Neuer Hafen, Bremerhaven, Tide independent	700m across, not visible from Conference Center	bis 30m ²	65
			31 – 40m ²	60
			41 – 50m ²	55
			51 – 60m ²	50
			61m ² and more	40
E F G	Emergency situation / Safty transfer (bad wether) from outside quays A, B, C, D (reduced fee)	Neuer Hafen, Bremerhaven Quay E, F, G after consultation	bis 30m ²	60
			31 – 40m ²	50
			41 – 50m ²	45
			51 – 60m ²	40
			61m ² and more	35

▶ 6. Impact of the Boat Show for your business

By taking part in the Boat Show at WINDFORCE 2015, your business can communicate and achieve the following objectives:

- present your product in viewings and test runs on the Weser River
- acquire new customers and cooperation partners
- show the commitment of your business to renewable energies and therefore environmental and climate protection
- engage your business in an international network
- present your business as a partner for pioneering technologies
- raise awareness of offshore wind energy among political decision-makers as well as the public
- put across the positive aspects of expanding offshore wind energy
- promote the networking of the maritime and offshore wind industries

▶ 7. Target group

Types of boats

- Offshore service vessels
- Offshore service assembly vessels
- Coastal, harbour and ocean-going tugs
- Transport barges
- Research and training vessels
- Diving and salvage vessels
- Munition recovery vessels

Visitor **WORKBOATS** in **WATERSHOW**

- Marine engineers and architects
- Equipment manufacturers and distributors
- Marine surveyors
- Political decision-makers
- Offshore wind energy experts

▶ 8. Planned number of boats

10 – 20 vessels

- up to 30 m²: 2
- 31 – 40 m²: 2
- 41 – 50 m²: 2
- 51 – 60 m²: 2
- 61 m² and over: 2

▶ 9. Port services and vessel support

For the Boat Show we are collaborating with a port service provider who is able to take on all types of port and vessel services round the clock, seven days a week.

Contact:

BPS Beutler Port Service

Amerikaring 18, 27580 Bremerhaven, Germany

Port Operation Manager: Holger Wottke

Phone: +49 / (0)471 / 92416-54

Fax: +49 / (0)471 / 92416-49

Mobile: +49 / (0)172 / 8975 820

h.wottke@bps-bremerhaven.de

www.bps-bremerhaven.de

▶ 10. Security

For the duration of the conference and the WORK BOATS in WATER Show, the organisers are engaging a security firm to guard quayside exhibits and the boats.

▶ 11. Visitors to the Boat Show

Safe access to your boat is a number one priority. The organisers will not be providing gangways!

Please contact the port service provider if needed.

▶ 12. Access for conference participants

Access to the Boat Show and Quayside Exhibition is included in the conference fee for participants.

▶ 13. Schleuse / Lock Neuer Hafen

The Schleuse/Lock Neuer Hafen can be used to enter Bremerhaven's Neuer Hafen port.
The following technical data apply:

Measurements

- usable length: 50 or 62.5 metres
- usable width: 14 metres
- depth: 5.5 to 6.5 metres MSL

Use

- lock times are 10 to 45 minutes depending on occupancy and water level difference
- highest lock water level = MSL + 2.8 metres
- lowest lock water level = MSL - 3 metres



Times of operation

- year-round
- from 1 May - 30 September: daily from 6 a.m. to 10 p.m.

Accessibility

VHF channel 10 = Nordschleuse
Phone: +49 / (0)471 / 3090 1428

Address

Schleuse Neuer Hafen
H.-H.-Meier-Strasse 18
27568 Bremerhaven, Germany
VHF channel 69
Phone: +49 / (0)471 / 9412840

▶ 14. Instructions for Boat Show exhibitors

- a) No mooring off will be permitted. Boats breaching this condition will be towed away and confiscated.
- b) The organiser is not responsible for items that go missing or are lost on board or on the quayside. Exhibitors must make their own insurance arrangements to cover such eventualities.
- c) All boats exhibited must be seaworthy and be fully equipped with necessary items such as anchors, ropes, fenders, and so forth. Machines and engines must be in full working order.
- d) All boats must be fitted with fire extinguisher equipment.
- e) Demonstration boats must be manned by fully competent seamen who must be available on board at all times in case of emergency.
- f) Flagpoles, signs, and banners: normal boat flags are allowed; the mounting and erection of further publicity material such as banners, signs, mobile flagpoles, boards and so forth are at the discretion of the organiser.
- g) Any marking or display of advertising on the boat or on the quayside must, following approval by the organiser, be carried out smoothly and with as little audible impact as possible.
- h) On-board cranes/davits/bowsprits must not overhang the quay or the walkways.
- i) Advertising blimps/balloons or similar items are not permitted on the walkways or in their vicinity.
- j) All boats must vacate their berth at the latest by 12 noon on Friday, 5 June 2015.
- k) In the event of an exhibitor wishing to substitute a smaller vessel for the one booked, this is possible but the original fee still applies.
- l) In the event of an exhibitor who has registered not being able to take up the berth, he must notify the organisers by 29 May 2015. Cancellations after this date will incur the full registration fee. The organisers retain the right to re-sell the space.
- m) In the event of an exhibitor wishing to present a boat that is bigger than the size registered, he must notify the organisers to confirm details and be liable for the additional charges due.
- n) Boat size will be examined by the organisers before the start of the show and checked against registration details. If boats are larger than their registered size, the organiser cannot guarantee a berth.

▶ Vessel registration:

Please contact the Workboats in Water management.

▶ Contact

Offshore Wind Messe und Veranstaltungen GmbH

Conference and Workboats in Water Management

Steffen Schleicher

Project Manager Offshore

WAB

Phone: +49 (0) 471 391 77 14

Mobile: +49 (0) 173 238 28 01

Steffen.Schleicher@wab.net

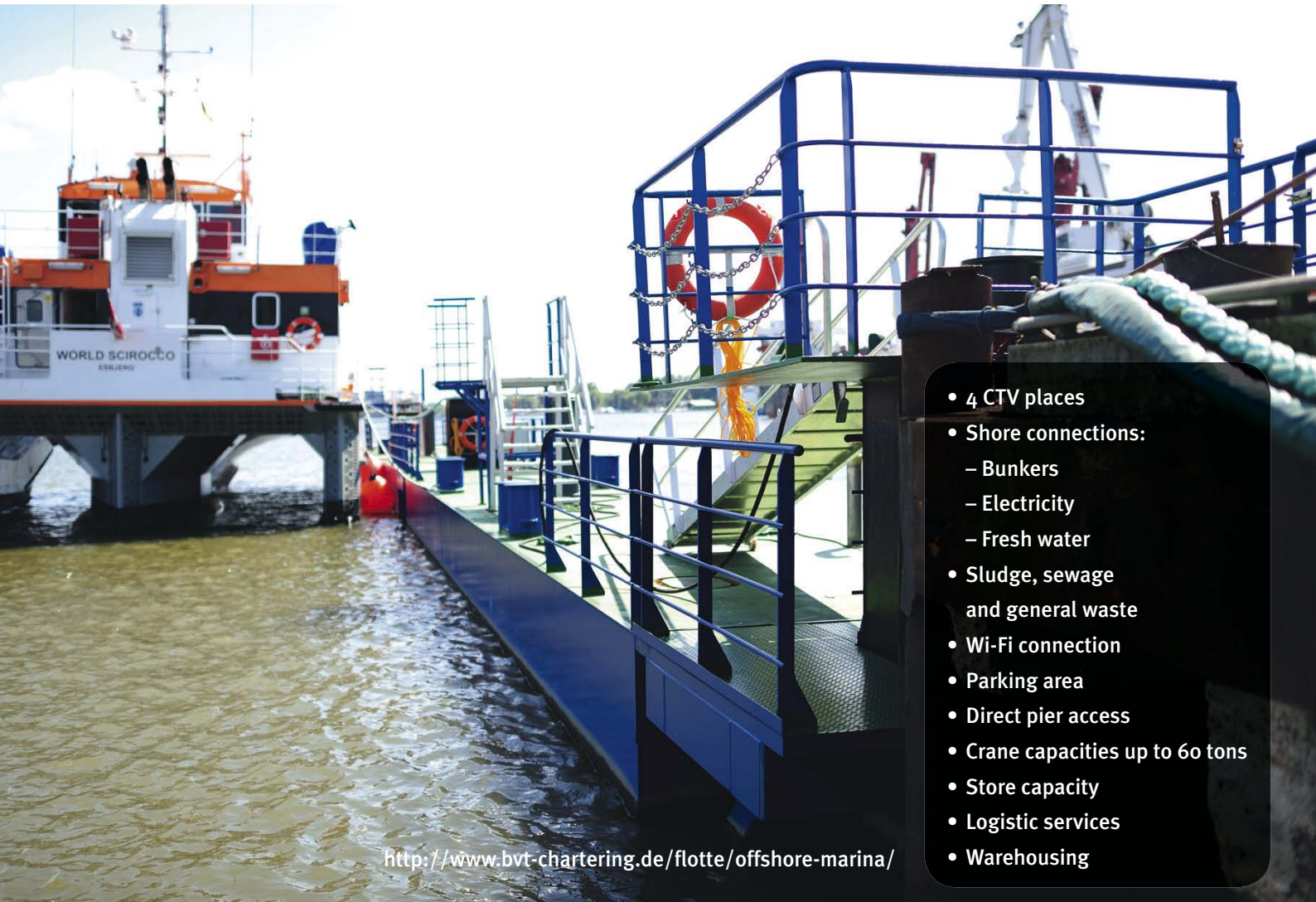
www.wab.net





Offshore Marina Bremerhaven *for Wind Farm Support Vessels*

More efficient processing means faster operational readiness



<http://www.bvt-chartering.de/flotte/offshore-marina/>

- 4 CTV places
- Shore connections:
 - Bunkers
 - Electricity
 - Fresh water
- Sludge, sewage and general waste
- Wi-Fi connection
- Parking area
- Direct pier access
- Crane capacities up to 60 tons
- Store capacity
- Logistic services
- Warehousing



BPS Beutler Port Service GmbH is an established company in Bremerhaven and a part of the regional network for the offshore wind energy branch. BPS is one of the very first service-agencies in Bremerhaven offering many years of experience, substantiated know-how and high flexibility with special scope for the offshore branch and a reliable full range of service 24/7.

We keep things moving – get in contact!

www.bps-bremerhaven.de

Facts and Figures

- Agency since year 2000
- Offices in Bremerhaven and Hamburg
- Operation range: all german ports of the North-Sea
- Offshore Team = 8
- Member of the WAB

Beutler Port Service
Offshore Support Agency

BPS GmbH, Amerikaring 18, 27580 Bremerhaven, Germany | +49 (0)471 924 16 40 | agency@bps-bremerhaven.de